

RE-8500 Realize your Rework

Jovy Systems®



Machine Feature

- **Multiple profiling options (standard lead-free, standard leaded and user define)**
- **Wide lower heating area (500mmx 450mm)**
- **Five channels thermocouple real time temperature reading**
- **Process & profile analyzer for complete process study and control**
- **Accurate temperature readings of +/- 2°C**
- **Alarm set point to increase the process safety and control**
- **Equipped with many types of reflectors for focusing and spotting the upper heater heating area**
- **Password protection for data and settings lock**
- **High ramp preheating and reflow up to 2.5°C/sec**
- **Optimum heating with 3 controlled heating zones**
- **Ideal application cooling phase in two methods optionally direct and indirect air flow, adjustable airflow power fan**
- **All Windows multi lingual OS**



Software Feature

- **Interactive and Easy to use Interface**
- **Multi-lingual interface**
- **Fast USB 2.0 connection**
- **Run manual processes or Pre-saved Profile Process**
- **Monitoring heat distribution on PCB by drawing thermo-couples reading on different five positions in a real time**
- **Do analysis on run process thermo-couples reading in real time.**
- **Save unlimited number of run process graphs and data (thermo-couples reading) files**
- **Complete process thermal behavior analysis tool**
- **Upgrade RE-8500 firmware through Software and USB 2.0 connection**
- **Full Control of all RE-8500 peripherals like fan, pump and laser**
- **Support Celsius and Fahrenheit temperature unit standards**



Process Profile Feature

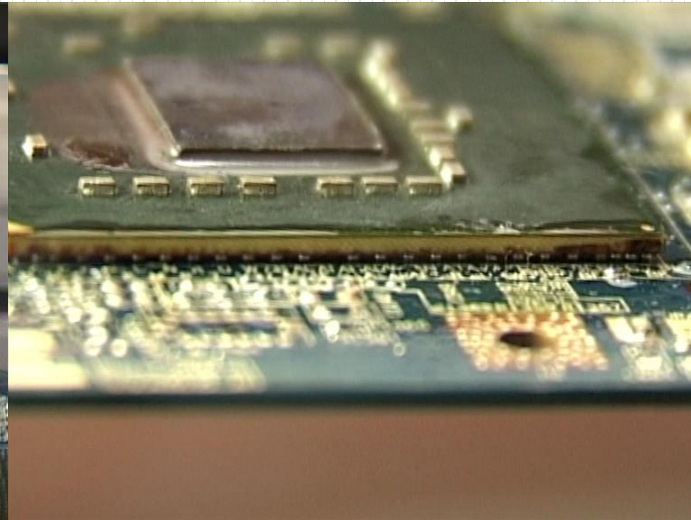
- **Profiles Creation:** where the user can create standard profiles or free profiles then download it to RE-8500 memory or save it on PC
- **Profiles Editing:** user can load any pre-saved profile on PC and edit its parameters
- **Profile manager mode:** where the user will be able to import, edit, delete and save the profiles saved on RE-8500 . Memory could be re-download it to RE-8500
- **Retrieve any profile stored in RE-8500 memory to run it through the interface**
- **Offline mode:** Can create profiles and analyze run process data files without connecting RE-8500



Parts functions and features

- **Pre-Heating Area of :500mmx450mm / 50cmx45cm with power of 3000watt segmented into two zones. Middle zone of 1000 watt and side zone of 2000watt**
- **Reflow heating Area of:120mmX60mm / 12cmX6cm with power of 600watt in one zone**
- **Vacuum pick up tool capable to left up to 200gm weight**
- **External cooling fan for cooling phase with rate of 3°C to 6°C**
- **Laser pointer for easy to place the component accurately within the heating area**
- **Two of standard wire Thermocouples to drive the process . One to be placed close to the targeted area and another to be placed underneath the targeted area**
- **Dynamic X/Y PCB holder in advanced design to fit with PCB sizes and shapes. In addition to a series of add-ons to be used with the X/Y PCB holder to cover all the applications dimensions and shapes**

Field of Applications



**Plastic
Sockets**

PTH

THT

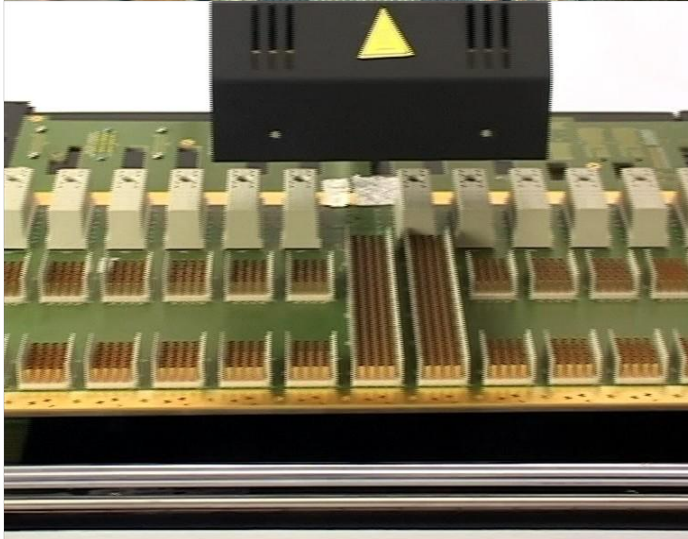
Pop

CSP

BGA

QFN

& More...



Custom, control and manage all the settings at your preferences and own standards with Free mode profile.



The screenshot displays the JOVY Systems software interface. On the left, there are five temperature control (TC) buttons labeled TC-1 through TC-5, each with a slider and a '0' value. Below these are two large buttons: 'Run Profile Process' and 'Run Manual control Process'. At the bottom left, there is an 'Exit' button and the text 'Offline Mode'. The main window title is 'JOVY Systems'. A 'Create Jovy Profile' dialog box is open in the center, showing the following settings:

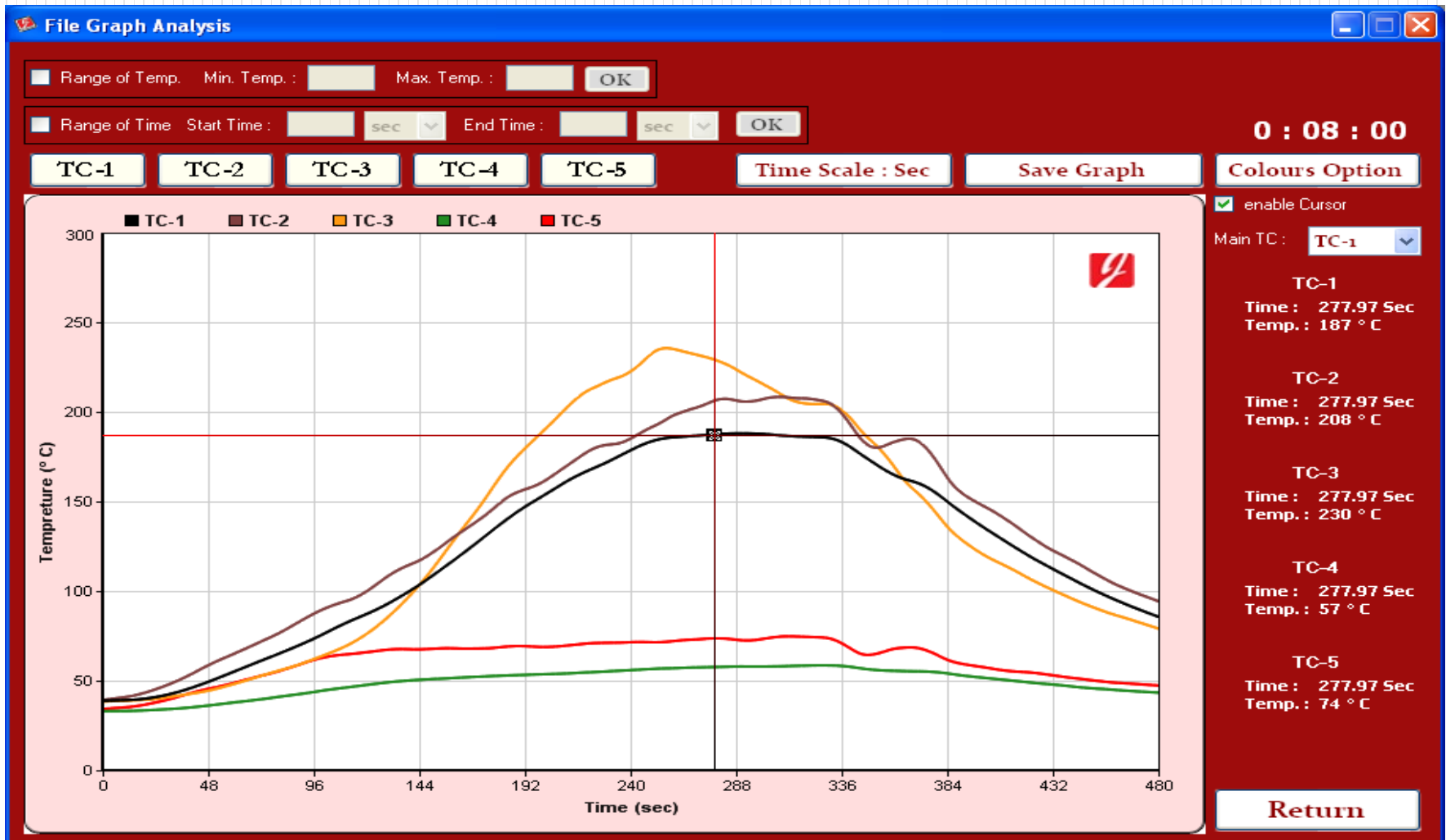
Parameter	Value	Unit
Name	free-mode_profile	
Preheat Temp.	170	°C
Soaking end Temp.	220	°C
Peak Temp.	270	°C
Peak Zone Time	80	Sec
Alarm Temp.	250	°C

The dialog box also includes three sections for heater power settings, each with three sliders and numerical values:

Stage	Heater	Power (%)
Preheating Stage Powers	Upper Heater	75
	Lower Heater	80
	Side Heaters	95
Soaking Stage Powers	Upper Heater	90
	Lower Heater	75
	Side Heaters	60
Reflow Stage Powers	Upper Heater	100
	Lower Heater	75
	Side Heaters	60

At the bottom of the dialog box, there are four buttons: 'Create Stages Messages', 'Download Profile to RE-8500', 'Save Profile', and 'Return'.

First of the world, free professional process & thermal analysis tool, with advanced features to retrieve, analyze and calculate the process temperature readings each second for five thermocouple readings.





File Data Analysis

Load Jovy File

Graphics Analysis

Step : **1** sec

File Information

File Name : **asus_leadfree_pid_test_2M.jvd**

Process Time : **480 sec**

Readings Temp. ranges :

TC-1Range : Maximum : **232 °C** Minimum : **30 °C**

TC-2Range : Maximum : **239 °C** Minimum : **30 °C**

TC-3Range : Maximum : **253 °C** Minimum : **30 °C**

TC-4Range : Maximum : **130 °C** Minimum : **30 °C**

TC-5Range : Maximum : **150 °C** Minimum : **30 °C**

Reading at Time :

Time : **278** sec

Get Readings

TC-1Reading : **230 °C**

TC-2Reading : **229 °C**

TC-3Reading : **248 °C**

TC-4Reading : **125 °C**

TC-5Reading : **143 °C**

Time to Temperature

Temperature : **230** °C

Get Time

TC-1Time : **278** Sec

TC-2Time : **278** Sec

TC-3Time : **258** Sec

TC-4Time : **—** Sec

TC-5Time : **—** Sec

Time (...)	TC-1	TC-2	TC-3	TC-4	TC-5	Uppe...	Lowe...	Side...
293	231	238	251	129	145			
294	232	237	251	128	145			
295	232	238	251	128	145			
296	230	238	249	129	143			
297	227	238	244	129	142			
298	223	239	238	129	142			
299	222	238	236	129	143			
300	223	238	238	128	143			
301	225	238	241	128	145			
302	227	237	243	128	147			
303	228	236	245	129	148			
304	228	234	245	129	148			
305	229	236	247	129	148			
306	230	236	248	129	148			
307	231	236	249	129	148			
308	230	236	249	129	147			
309	231	235	251	129	146			
310	231	234	250	129	145			
311	231	235	250	129	144			
312	231	236	250	129	143			
313	230	236	250	129	142			
314	230	234	250	129	141			
315	231	234	250	129	141			

Range of Time Start Time : sec End Time : sec

Update Data

Return



Please contact our sales department for quotation

Sales@jovy-sys.com

For further information and technical inquiry, please get in contact with Technical Support Department

Support@jovy-sys.com